

MONTHLY MEMBERSHIP PROGRESS REPORT

District 5M 9

Results as of: 5/31/2024

GMT:

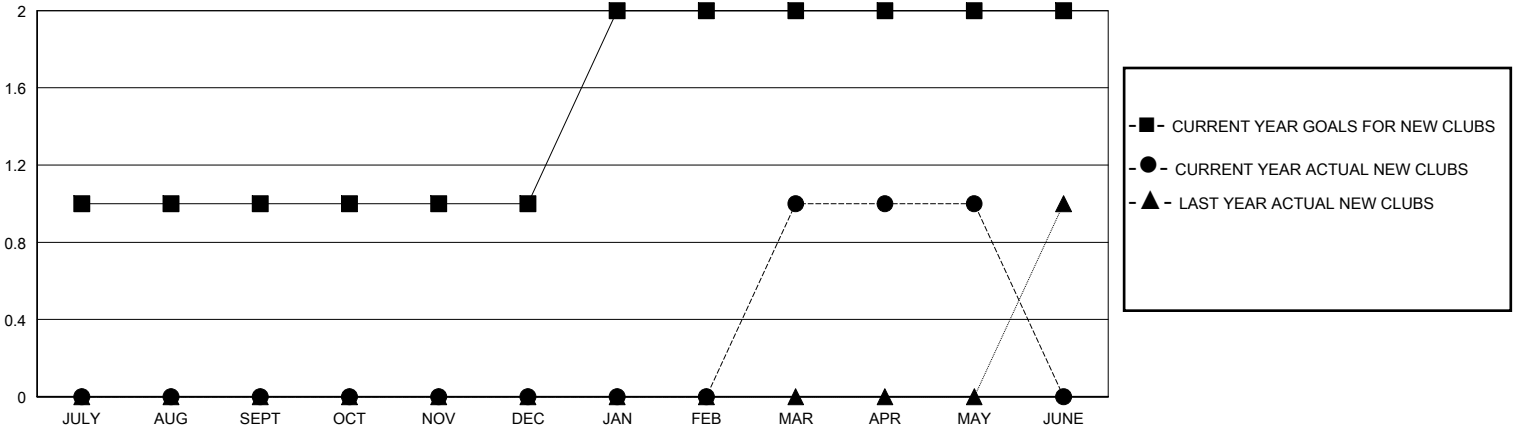
LOCATION MINNESOTA

GMT CA

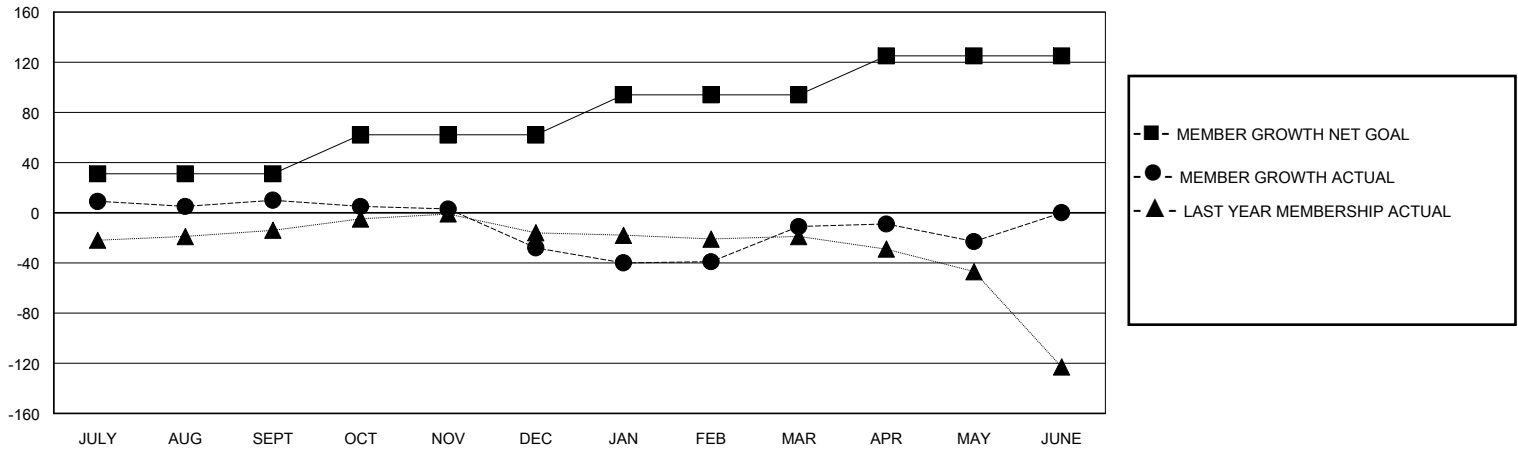
Clubs			
RESULTS FOR 2023-2024			
QUARTER	NEW CLUB GOAL	NEW CLUBS	DROPPED CLUBS
JULY/AUG/SEPT	1	0	0
OCT/NOV/DEC	0	0	0
JAN/FEB/MAR	1	1	0
APR/MAY/JUNE	0	0	1

Members			
RESULTS FOR 2023-2024			
QUARTER	MEMBER GROWTH NET GOAL	MEMBER GROWTH ACTUAL	DROPPED MEMBERS ACTUAL (including transfers)
JULY/AUG/SEPT	31	63	45
OCT/NOV/DEC	31	21	57
JAN/FEB/MAR	32	66	47
APR/MAY/JUNE	31	26	36

GOALS AND ACTUAL NEW CLUBS CUMULATIVE



GOALS AND ACTUAL MEMBERS CUMULATIVE



DROPPED CLUBS: 1	42 CLUBS OF 63 ADDED 1 OR MORE NEW MEMBERS	GENDER DISTRIBUTION	
		MALE 1,141 (59.00%)	FEMALE 791 (40.90%)
DROPPED MEMBERS		CLICK HERE FOR CUMULATIVE MEMBERSHIP DATA	TOTAL FAMILY UNIT MEMBERS 612
DECEASED 18	CLUB CANCELLED 8		FAMILY MEMBERS PAYING HALF DUES 308
OTHER 159	TOTAL 185		